

 CITTERIO



Frame/

Design by/ P. Borgonovo

Furniture

PLUS

**MODULAR
SYSTEM
WITH ANODISED
EXTRUDED
ALUMINIUM
FRAME**

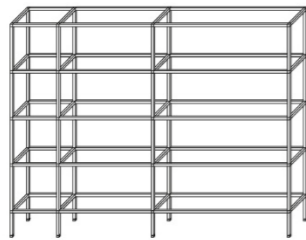




- ANODISED EXTRUDED ALUMINIUM **FRAME**
- TOPS, SIDES AND BACKS IN **ALUMINIUM, GLASS** OR **PHENOLIC WOOD** (MATT OR GLOSS LACQUER)
- **3 WIDTH OPTIONS**
- **3 DEPTH OPTIONS**
- **2 HEIGHTS**
- **ALUMINIUM, GLASS** OR **PHENOLIC WOOD** DOORS
- **DROP LEAF** OR **HINGED** DOORS
- LARGE **PULL-OUT** DRAWERS

TYPOLOGIES

FRAME



**SQUARE OR
RECTANGULAR
MODULES**

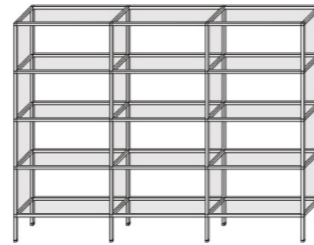
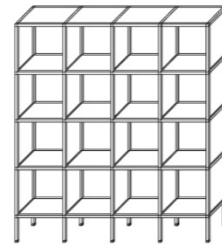
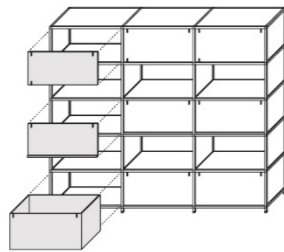
L 37,4/ 74,8/ 93,5
H 37,4/ 18,7

P 39,3

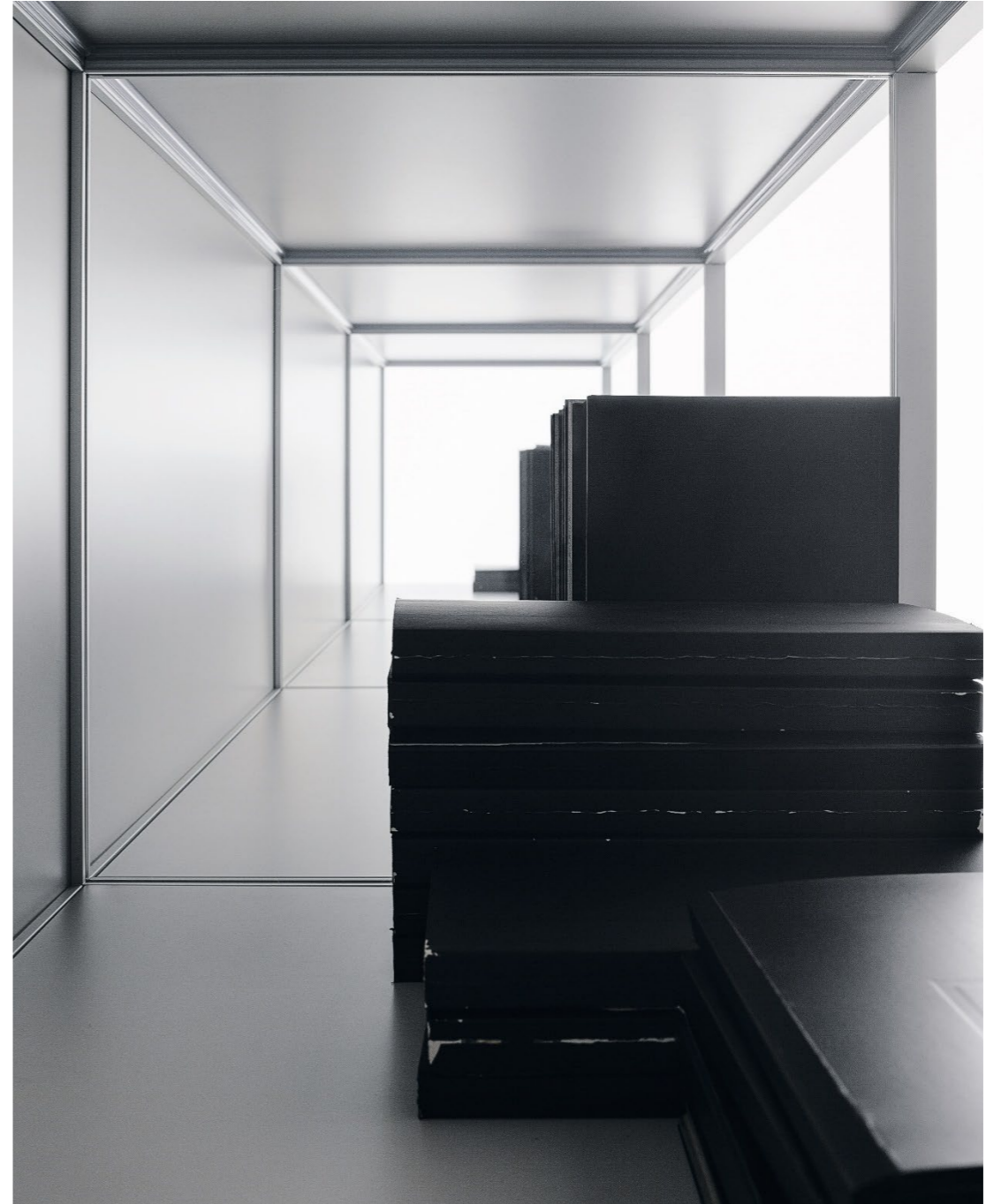
P 58

P 76,6

**SUGGESTED
COMBINATION**



ANODISED
ALUMINIUM
FRAME



TOPS AND SIDES
IN **ALUMINIUM,**
GLASS OR
LACQUERED
PHENOLIC WOOD



GLASS
DROP-LEAF
DOORS



LACQUERED
PHENOLIC WOOD
DROP-LEAF
DOORS

THICKNESS 6 mm



PHENOLIC
LACQUERED
WOOD **LARGE**
PULL-OUT
DRAWER



ADJUSTABLE FEET

3 HEIGHTS

3,5 / 9 / 18 cm



MAGNETIC CLOSING SYSTEM



CAST
ALUMINIUM
JUNCTIONS

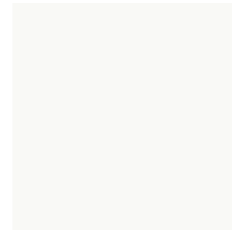




FINISHES



Laquered



O101
White



O200
Black



O170
Mustard

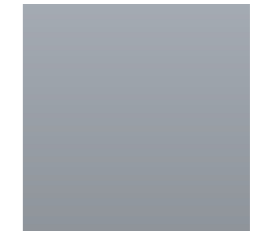


O160
Platinum



O130
Green grey

Metals

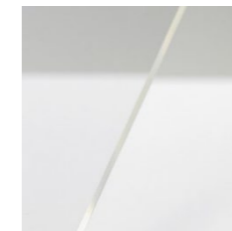


A61
Natural aluminium

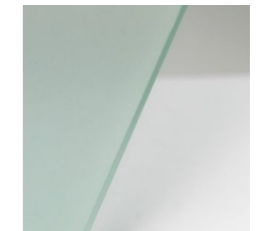
Glasses



V1
Clear glass



V2
Extra-clear glass



V3
Acid-etched glass



CITTERIO SPA

VIA DON GIUSEPPE BRAMBILLA 16/18
23844 SIRONE (LECCO) - ITALIA
T. +39.031.853545 | F. +39.031.853529 |
www.citteriospa.com | vendite@citteriospa.com

ISO 9001 and ISO 14001 certified company
FSC[®] License C141846 - Leed[®] Compliance